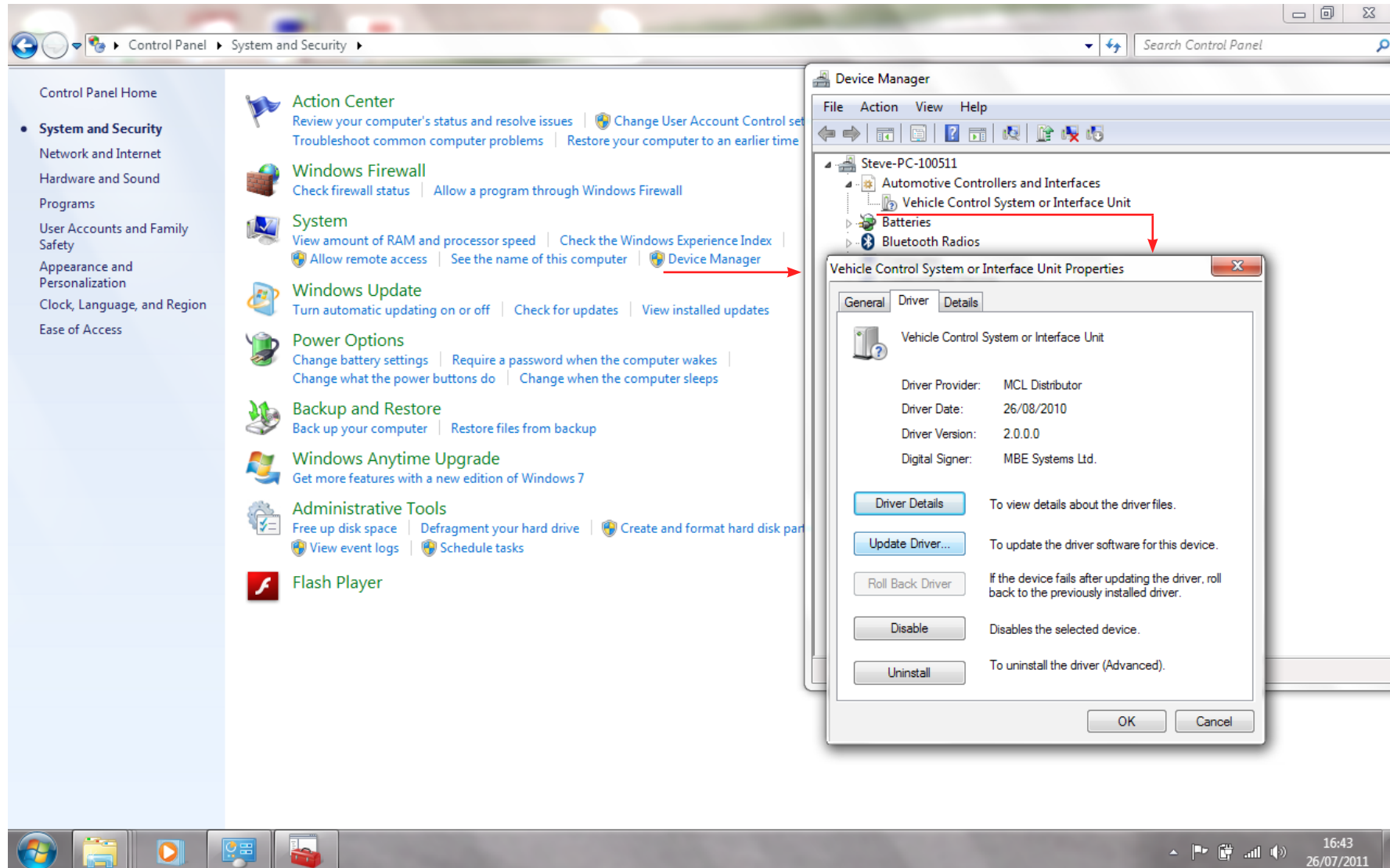
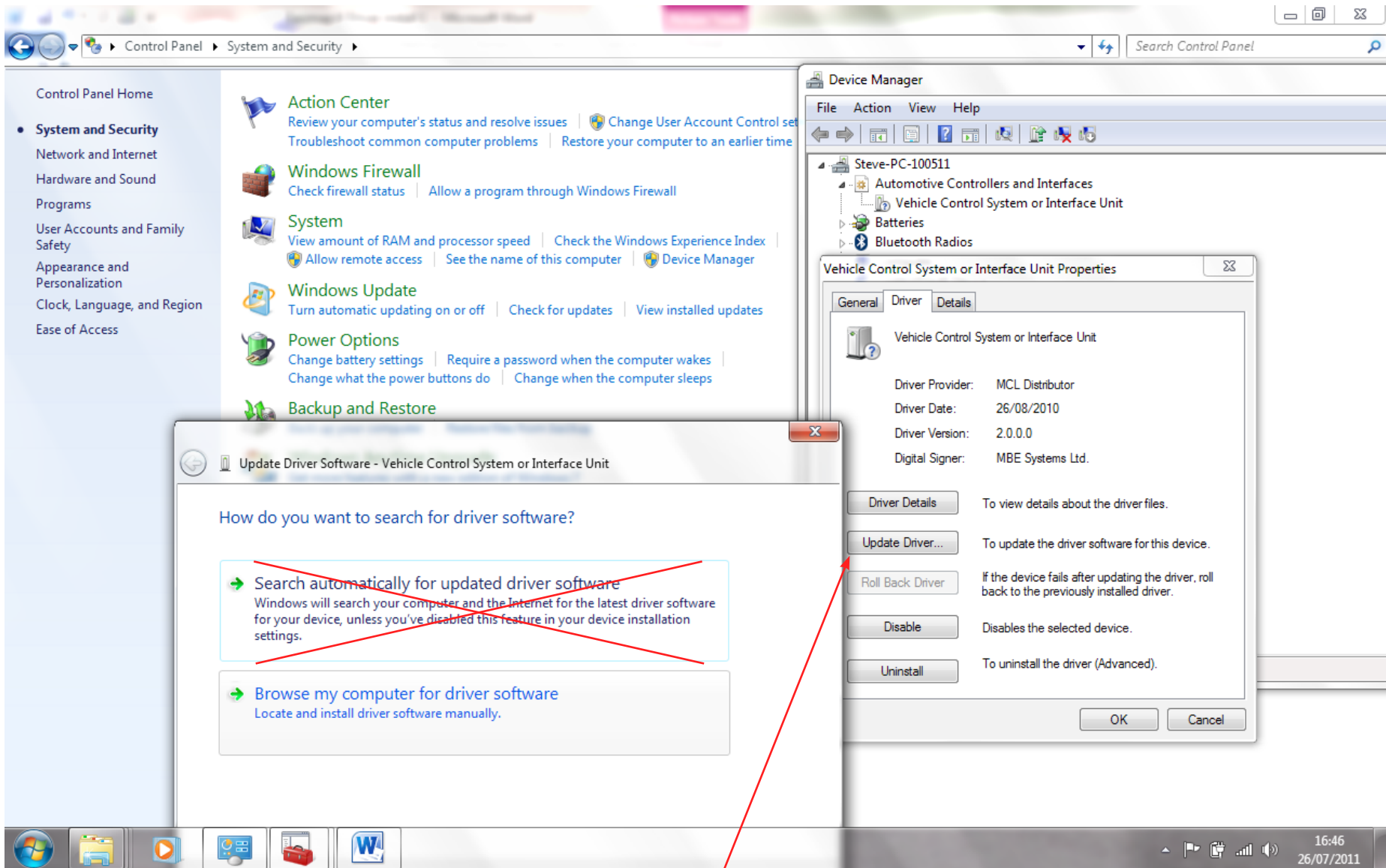


HOW TO FIX INSTALL DRIVERS ISSUES

After installing Easimap 6, you should have plugged in your MBE985 mapping interface. The software will normally install the drivers automatically however if you have unplugged it before Windows has finished installing its drivers, Windows will think you do not wish to install the system & will never install the drivers again. In order to fix this problem, you have to manually tell Windows to install the drivers. You must plug in your MBE985 & then follow the procedure below. ***This needs to be done before you plug into the car.***

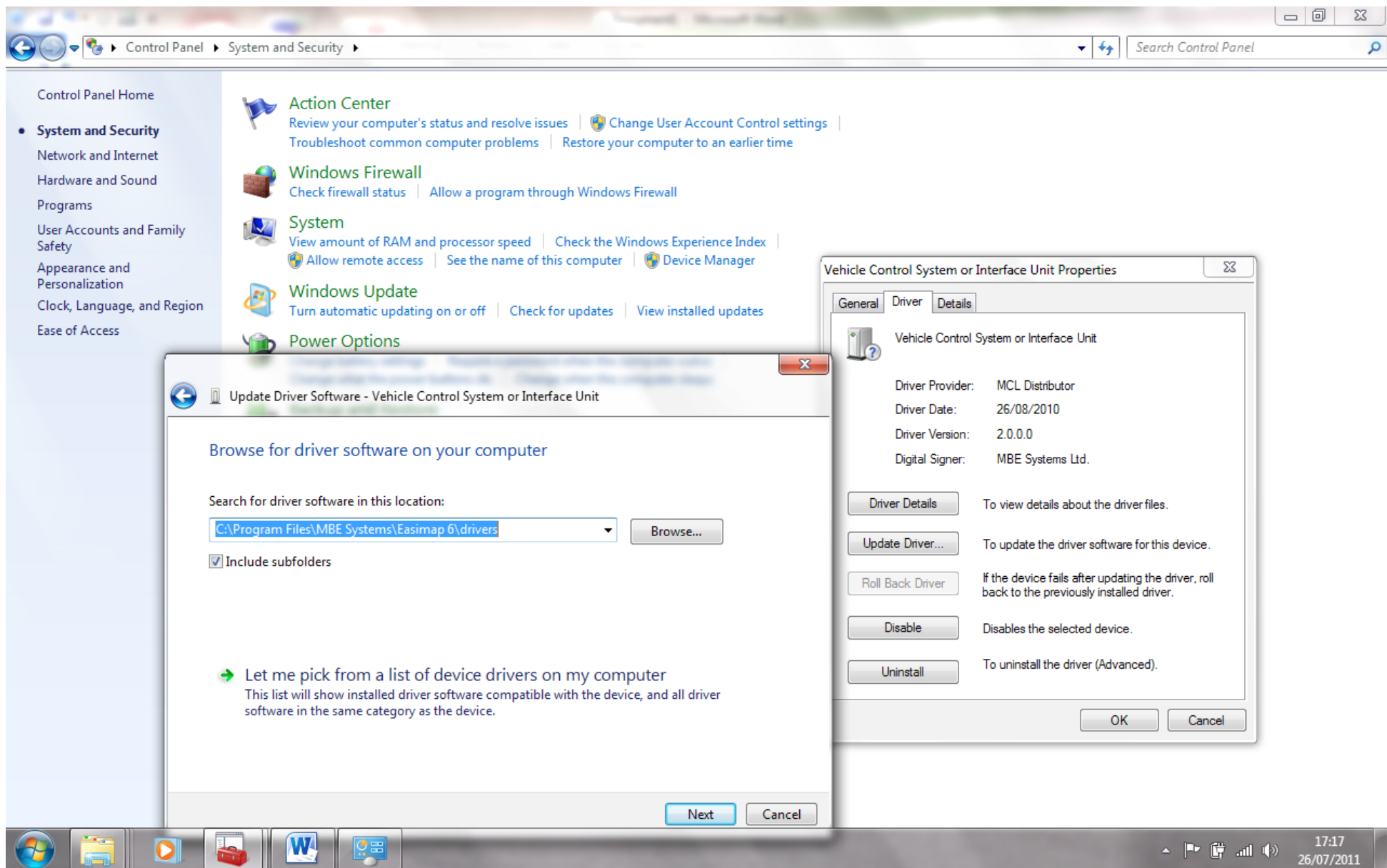
If you are having difficulty following these instructions, please contact your local computer expert for assistance.





Right click 'Update Driver' button to update Driver software & choose option to browse computer for driver software.

Choose the C:\Program Files\MBE Systems\Easimap 6\drivers (see below) & click next.



Once this is complete, then open Easimap 6.

The screenshot displays the Easimap 6.0 software interface. The window title is "Easimap 6.R29 - 9AX-basic.pge - Page 1 / 9". The menu bar includes "File", "Page", "System", "Mapping", "Logging", "Tools", "Options", and "Help". The toolbar contains various icons for file operations and system functions. The main interface is a dark blue dashboard with several data readouts and gauges. On the left side, there are four icons: "Basic Fuel Map", "Basic Ignition Map", "Engine Settings", and "Throttle Index". The central area features two large circular gauges for "Engine Speed" and "Throttle Site 1", both showing "0.000" and "demo". To the right, there are several smaller readouts: "Battery Voltage" (0.660 demo), "Battery Voltage Comp" (0.000 demo), "Air Temp" (0.660 demo), "Air Temp Fuel Factor" (0.660 demo), "Coolant Temp" (0.660 demo), "Coolant Fuel Factor" (0.660 demo), and "ECU Status" (0.660 demo). At the bottom, there are more readouts: "Mapping Pot 1" (0.660 demo), "TPS Fuel + Trim" (0.660 demo), "Final Injection Time" (0.660 demo), "Duty Cycle" (0.660 demo), "Mapping Pot 2" (0.660 demo), "TPS vs Speed Ign + Trim" (0.000 demo), "Ignition Advance" (0.000 demo), "Soft Cut" (0.660 demo), and "Hard Cut" (0.660 demo). The status bar at the bottom shows "Ready", "Automatic Logging", "Logging Data >>", "Log Size: 0 Bytes", "Log Time +00:00:18", "Profile: Master", and the system clock "09:57 27/07/2011".

See box to confirm device (MBE985) found.

The screenshot displays the Easimap 6.R29 software interface. The window title is "Easimap 6.R29 - 9AX-basic.pge - Page 1 / 9". The menu bar includes "File", "Page", "System", "Mapping", "Logging", "Tools", "Options", and "Help". The toolbar contains various icons for file operations and system functions. The main interface area is divided into several panels:

- Engine Speed:** Two panels showing "0.015".
- Throttle Site 1:** Two panels showing "0.015 demo".
- Throttle Angle 1:** A panel showing "---".
- Mapping Pot 1:** A panel showing "---".
- Mapping Pot 2:** A panel showing "---".
- TPS Fuel + Trim:** A panel showing "---".
- TPS vs Speed Ign + Trim:** A panel showing "0.015 demo".
- Final Injection Time:** A panel showing "---".
- Duty Cycle:** A panel showing "---".
- Ignition Advance:** A panel showing "0.015 demo".
- Battery Voltage:** A panel showing "---".
- Battery Voltage Comp:** A panel showing "0.015 demo".
- Air Temp:** A panel showing "---".
- Air Temp Fuel Factor:** A panel showing "---".
- Coolant Temp:** A panel showing "---".
- Coolant Fuel Factor:** A panel showing "---".
- ECU Status:** A panel showing "---".
- Soft Cut:** A panel showing "---".
- Hard Cut:** A panel showing "---".

On the left side, there are four icons labeled "Basic Fuel Map", "Basic Ignition Map", "Engine Settings", and "Throttle Index". At the top right, a status bar shows "9A4ad48c.ec2", "USB-CAN interface" (highlighted with a red arrow), and "LiveMap Mode OFF". The Windows taskbar at the bottom shows "Ready", "Automatic Logging", "Logging Data >>", "Log Size: 0 Bytes", "Log Time +00:01:27", "Profile: Master", and the system tray with the time "09:58" and date "27/07/2011".